

**Argentina**

Chloride Koexa S.A.  
San Nicolás 1542  
(C1407DDD) Buenos Aires  
Argentina  
Tel: +54 11 4639-4404  
Fax: +54 11 4639-4405

**Australia**

Chloride Power Protection Pty Ltd  
Ground Floor  
16 Giffnock Avenue  
North Ryde NSW 2113  
Australia  
Tel: +61 (0) 2 98881266  
Fax: +61 (0) 2 98881966

**Brazil**

Chloride Power Protection  
Av. Eng. Alberto de Zagottis, 695  
Jurubatuba - São Paulo - SP  
CEP: 04675-085  
Brasil  
Tel: +55 11 5541 5599  
Fax: +55 11 5541 5599

**China**

Chloride Masterguard Power Systems Ltd.,  
Shanghai (CMPS)  
CIMIC Tower, Office 417  
1090 Century Avenue  
Pudong  
Shanghai 200120  
China  
Tel: +86 21 58361820  
Fax: +86 21 58361690

**France & International**

Chloride Industrial Systems  
30 Avenue Montgolfier - BP 90  
69684 Chassieu Cedex  
France  
Tel: +33 (0) 4 78 40 13 56  
Fax: +33 (0) 4 78 90 58 90

Chloride Power Protection  
1 rue Félix Potin  
Z.A. Les Belles Vues  
91290 Arpajon  
France  
Tel: +33 (0) 1 69 26 12 81  
Fax: +33 (0) 1 60 83 18 16

**Germany**

Masterguard GmbH  
Schallershofer Str. 141  
91056 Erlangen  
Germany  
Tel: +49 (0) 9131 6300 100  
Fax: +49 (0) 9131 6300 270

**Italy**

Chloride UPS Systems  
Via Fornace 30  
40023 Castelguelfo  
Bologna  
Italy  
Tel: +39 0542 632111  
Fax: +39 0542 632120

**Portugal**

Chloride Power Protection  
Rua dos Terços 574  
Zona Industrial de Canelas  
4405 270 Canelas VNG  
Portugal  
Tel: +351 (0) 2 27 151210  
Fax: +351 (0) 2 27 126337

**Spain**

Chloride España, S.A.U.  
Edificio Europa III  
C/San Rafael 1. Pol. Ind. Alcobendas  
28108 Alcobendas Madrid  
Spain  
Tel: +34 91 414 00 30  
Fax: +34 91 662 37 76

**Thailand**

Chloride Power Protection  
Panjathani Tower, 20th Floor  
127/25 Nonsee Road  
Chongnonsee  
Yannawa  
Bangkok 10120  
Thailand  
Tel: +662 681 0100  
Fax: +662 681 0109

**Turkey**

Masterguard  
Sebnem Sok n°:14 K:4  
81110 Bostanci-Istanbul  
Turkey  
Tel: +90 216 464 47 00  
Fax: +90 216 464 47 15

**UAE**

Chloride Industrial Middle East  
FZ LLC  
PO BOX 500221  
Building 5, office 118  
Dubai internet city  
Dubai  
UAE  
Tel: +971 4 391 5333  
Fax: +971 4 391 5335

**UK**

Chloride Power Protection  
George Curl Way  
Southampton  
SO18 2RY  
UK  
Tel: +44 (0) 23 8061 0311  
Fax: +44 (0) 23 8061 0852

**USA**

Chloride Power Protection  
27944 North Bradley Road  
Libertyville  
IL 60048  
USA  
Tel: + 1 847 816 6000  
Fax: + 1 847 549 7919

This publication is issued to provide outline information only and is not deemed to form any part of any offer or contract. The company has a policy of continuous product development and improvement, and we therefore reserve the right to vary any information without prior notice.



**Excor**  
2.5 - 30 kVA - 1 ph

**CHLORIDE**  
INDUSTRIAL SYSTEMS

Chloride Industrial Systems  
30 avenue Montgolfier - BP 90  
69684 Chassieu cedex - France  
Tel.: +33 (0)4 78 40 13 56  
Fax: +33 (0)4 78 90 58 90

[www.chloridepower.com](http://www.chloridepower.com)  
[industrial.sales@chloridepower.com](mailto:industrial.sales@chloridepower.com)  
[industrial.support@chloridepower.com](mailto:industrial.support@chloridepower.com)



# EXCOR AC UPS 2.5 - 30 kVA - 1 ph

## The range

The Excor range of industrial Uninterruptible Power System (UPS), is available as standard from 2.5 to 30 kVA, in 1-phase output. In 3-phase input, Excor is the best UPS solution to protect mission critical applications of low power but needing the longest autonomies.

## Flexibility for customized solutions

Thanks to its specific constitution, the Excor is a unique industrial product adaptable to the most restricting applications.

Its design is based on a rectifier-charger sub-assembly from the Excel Plus range and on an inverter-static switch sub-assembly from the Exond range. This specific structure makes the Excor adaptable to the needs of your load and its environment. A wide range of options is available to provide tailored solutions:

- external protection up to IP54,
- AC and/or DC distributions,
- parallel configuration of whole or part of the system,
- serial DC/DC regulator allowing to supply a critical DC load with the same UPS equipment,
- isolated DC/DC converter allowing the conversion of the battery voltage into an acceptable voltage for the DC load to secure...

## Reliability

The Excor range is equipped with a thyristor rectifying bridge and an IGBT Trench transistor switching bridge.

The output voltage regulation is ensured by using the Pulse Width Modulation (PWM).

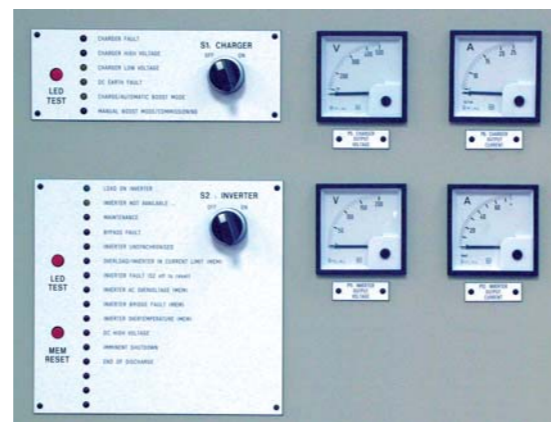
These reliable and efficient technologies have been experienced for several years by Chloride; they ensure a high quality sinusoidal output voltage.

The Excor is a seal of reliability for your mission critical loads. Its design is the result of Chloride's long experience in harsh industrial application.

The resulting benefits are:

- system lifetime of at least 20 years in continuous operation conditions,
- robust mechanical design (vertical and horizontal acceleration stress up to 0,2g),
- high clearance capacity to eliminate short-circuits downstream the inverter (short-circuit withstanding of 250% of nominal rating).

## Communication



With the Excor range, the user visualises all the necessary information from the front-face of the equipment.

The analogue meters allow quick reading of the measured values. The LEDs provide the operator with status and active alarms of the equipment, thanks to clear assigned messages.

Several status indicators and alarms can be made available on voltage-free contacts to enable remote monitoring of the system.

## Advanced battery care

The Excor range is fully compatible with lead-acid and nickel-cadmium batteries, vented or recombination-type.

The rectifier-charger module includes an electronic control system to optimize battery performances and lifetime.

A programmable battery test is available as an option to help the operator evaluate the global efficiency of the battery.

## Applications

The Excor range protects the most critical industrial processes such as:

- oil and gas offshore and onshore development,
- power generation plants, transmission and distribution networks,
- transportation.

## Secure Power Always

In order to reach the highest level of business continuity, Chloride offers a range of maintenance plans, which will:

- help deliver reliability to your load,
- increase the lifetime of your power protection equipment,
- optimise your capital expenditure,
- provide risk management at a fixed cost,
- provide a pro-active approach to disaster recovery.

For more information please contact your local Chloride sales office.

[www.chloridepower.com](http://www.chloridepower.com)

**Delegate your power management to the experts.**

## Technical data

Ratings (kVA)*	2,5	5	7,5	10	15	20	30	
1-Phase output 110 VAC or 220 VAC	110 VDC						220 VDC	
							400 VDC	

\* Special design up to 400 kVA, upon technical specification

## Input

Nominal AC input voltage	3 x 400 VAC (3 x 380 V, 3 x 415 V)
Input voltage tolerance	-10% / +15%
Nominal frequency / tolerance	50 Hz (60 Hz) / ± 5%

## Intermediate DC circuit

DC voltage	110 / 220 / 400 VDC
DC voltage tolerance	-20% / +18%

## Output

Rated 1-phase AC output voltage	110 / 120 / 220 / 230 / 240 VAC
Output frequency	50 Hz (60 Hz)
Frequency response	1 Hz / sec
Frequency stability :	
• with own oscillator	± 0,05%
• with Mains synchronisation	± 1,5% (adjustable to ± 0,75% ; 3% ; 6%)
Harmonic distortion :	
• with 100% linear load	3%
• with 100% non-linear load - CF 3/1	5%
Synchronisation voltage limits	±15%
Dynamic voltage response	±3% (to 0-100% - 0 of load variation)
Static regulation (100% of load)	±1% (in steady state)
Overload capacity	125% for 10 min. / 150% for 1 min.
Short-circuit capability	250% In
Load power factor	0,5 lag to 0,9 lead
Output crest factor admissible	3:1

## General data

Operating temperature	0 °C to 40 °C
Relative humidity	< 95% non condensing
Operating altitude	1000m (without derating)
Cooling	Fan-assisted, Turbine forced according to ratings
External protection	IP21 as standard (others available upon request)
Lock	Steel locked door
Painting	Grey RAL 7035 textured semi-gloss
Dimensions	According to ratings and options - consult us

## Standards

Compliance	IEC 950, 439, 146, 529, 726 - EMC (62040-2) and security (62040-1-2)
CE directives	73 / 23 / EEC - LV and 89 / 336 / EEC - EMC
US standards	Manufacturing following UL, ANSI, NEMA, IEEE standard is available upon demand

## Options

Charger	Mains supply failure monitor, reduction of supply current distortion, inrush current limitation, additional ripple filter, input circuit breaker...
Battery	Regulation according to temperature, charging current regulation, automatic test, low voltage disconnect contactor, protection box, tailored battery cabinet...
System	Parallel configurations, serial DC/DC regulator, isolated DC/DC converter, DC or AC distribution, DC and/or AC earth fault alarm, frontface active or passive mimic panel, additional alarm contact...
Mechanical	Up to IP54 external, IP20 internal, top cable entry, other painting, anti-seismic...